

# Curriculum Content

**Timorous Beasties** Tonal beetle drawings which are then stylised by using a black fine line pen to create patterns inside the drawing and around the outside. Digital technologies used to them colour this and repeat it to create a wallpaper design.

**Claude Monet Landscape** Water colour paints used to create a winter landscape inspired by Impressionism artist, Claude Monet.

**Relief Printing** Tunnocks teacake line drawing which is then developed into a relief print. Using water colour paints to create a harmonious tartan background to add the relief print to.

**Clay Sculptures** Clay sculptures inspired by James De Rosso. 3D skills working with air drying clay to create a unique monster sculpture which will be painted and glazed when dry.

**Theory** Multiple artist research tasks throughout the year.

# Assessment

## Formative Assessment

Class discussions  
Peer feedback  
Self evaluation  
Teacher verbal and written feedback  
Learner conversations

## Summative Assessment













Practical work assessed through rubrics—split into the main elements for each unit i.e proportions and media handling of specific materials.  
  
Written feedback in feedback booklets as well as on the back of final pieces of work— feeds into learner conversations.

Click the links to learn more about formative and summative assessment approaches:

⇒ [Updated guidance on assessment within the broad general education](#)

⇒ [Bing Videos](#)

# Meta-skills

Self-management	Focusing		✓
	Integrity		
	Adapting		
	Initiative		✓
Social Intelligence	Communicating		
	Feeling		
	Collaborating		
	Leading		
Innovation	Curiosity		✓
	Sense-making		
	Creativity		✓
	Critical thinking		✓

To find out more detail about the meta skills learned in this curriculum area, please view the meta skills section on our school website.

# Kindness

# Respect

# Ambition

[UNCRC](#)



[Celebrating Success](#)

Plaza exhibition—updated monthly

Positive behaviour stamp cards

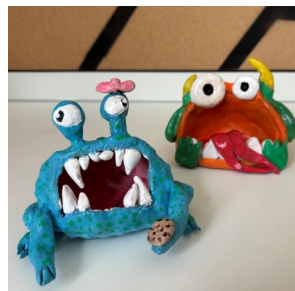
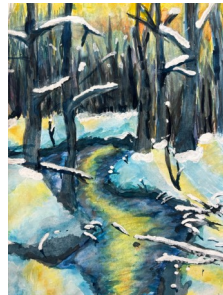
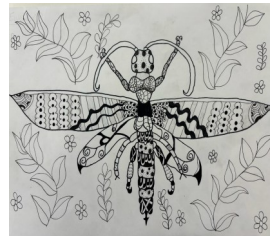
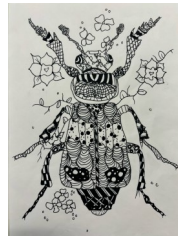
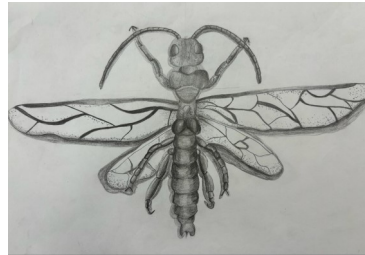
Praise feedback

Using work as exemplars

[Staff List](#)

Miss Chisholm

[Add subject specific/photos](#)  
[\(examples of work/pupils\)](#)



## WINCHBURGH ACADEMY



## BGE Art & Design

[S1 Curriculum Overview](#)